

Job Title Energy Assessor

Package £ salary commensurate with experience

Hybrid Working

Private Healthcare



Overview

Element Sustainability Ltd. is a successful, well-established provider of technical compliance and sustainability assessment services to the construction and development industry. We have an exciting opportunity for an energy consultant to join our expanding team, assisting with the ongoing development of our business.

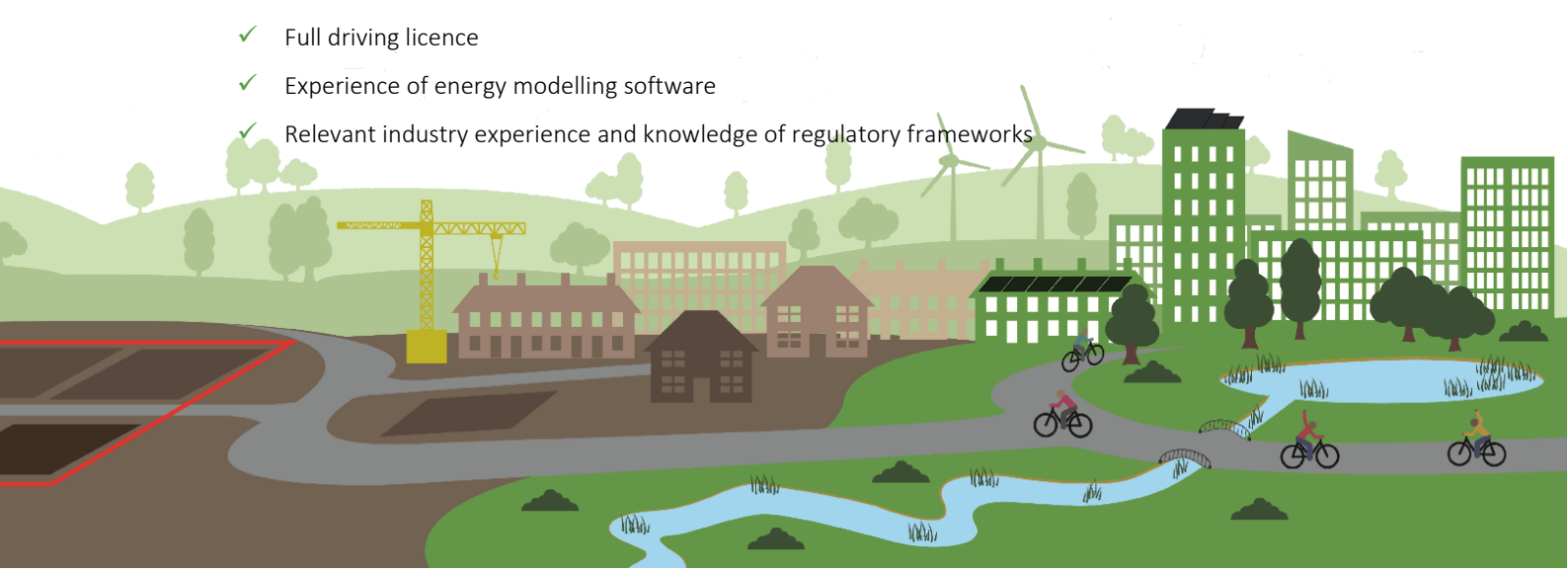
Role Summary

Your role will focus on the delivery of the technical elements of our project work providing building compliance services to the construction sector with various residential and commercial projects. Working as an Energy Assessor (OCDEA/NDEA) you will;

- ✓ Undertake
 - SAP assessments and calculations
 - SBEM / DSM assessments and calculations
 - Overheating and daylighting calculations
 - U value calculations
- ✓ Deliver technical support to clients
- ✓ Generate energy statements and reports for planning
- ✓ Demonstrate organisational skills and deliver clients reports in a timely manner

To be considered for this Energy Assessor (OCDEA/NDEA) role you will have;

- ✓ SAP / SBEM / DSM qualifications
- ✓ Excellent communication skills
- ✓ Full driving licence
- ✓ Experience of energy modelling software
- ✓ Relevant industry experience and knowledge of regulatory frameworks



Responsibilities

Key Skills

- ✓ Reporting (both planning and technical)
- ✓ Energy assessments (SAP, SBEM, DSM, Part L and net zero carbon strategy)
- ✓ Building modelling (Design Builder, Overheating (Part O/TM52/59) and daylighting)
- ✓ Knowledge of Life Cycle Analysis preferable but not essential
- ✓ End-to-end management of client engagement and projects
- ✓ Assist the client in achieving compliance with building regulations, planning policy and sustainability-compliance targets
- ✓ Determine appropriate methodologies and compliance strategies
- ✓ Input to, compilation / review / quality assurance of technical reports and output
- ✓ Report to the team leader and complete administrative and accounting tasks
- ✓ Engage with and manage clients to identify service opportunities.



Candidate Requirements

General Criteria

- ✓ A team player, highly organised, motivated and self-disciplined
- ✓ Experience and appreciation of working in a collaborative working environment
- ✓ Qualified, with demonstrable experience in this sector
- ✓ Commercial awareness of Building Regulations, planning process and construction industry - working knowledge of UK environmental regulatory framework, technical appraisals, compliance targets and sustainability assessment criteria
- ✓ Good numeracy skills
- ✓ Excellent interpersonal and communication skills, both written and verbal



Education, Qualifications & Experience



ELEMENT
SUSTAINABILITY

Successful candidates will demonstrate the following:

- ✓ Educated to a minimum of degree level (or equivalent) in a related discipline.
- ✓ Minimum 2 years industry experience
- ✓ Ideally professionally qualified through relevant professional body (IEMA, CIBSE, LCC etc.)

Computer Skills

- ✓ Experience of building energy modelling software (Design SAP, Design Builder, IES, TAS)
- ✓ Computer literate with MS Office skills

Additional Requirements

- ✓ Full driving licence with less than 3 points
- ✓ Willingness to travel

Benefits

- ✓ Competitive salary
- ✓ Hybrid working model and potential for flexible hours
- ✓ Private healthcare
- ✓ Staff social calendar & excellent, supportive working environment
- ✓ Great career prospects
- ✓ You will be joining a multi-disciplinary team, working in a professional yet relaxed environment based in our own office in beautiful Cheshire countryside surroundings.

Get in touch!

If this sounds like the job for you then please contact Caroline Wills on 01829 733 444 (#1).

Alternatively, email your CV and we'll call you back. Emails to hello@elementsustainability.co.uk

